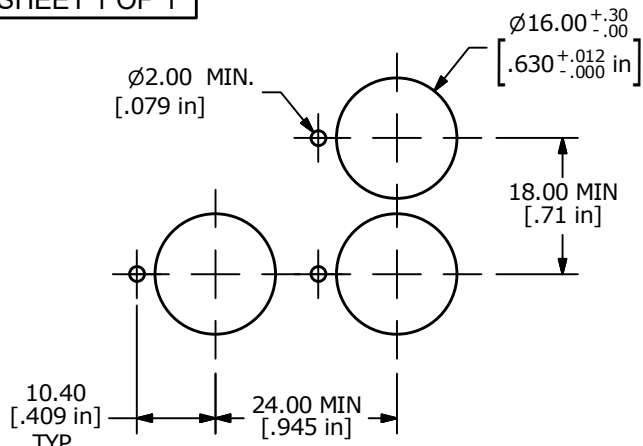
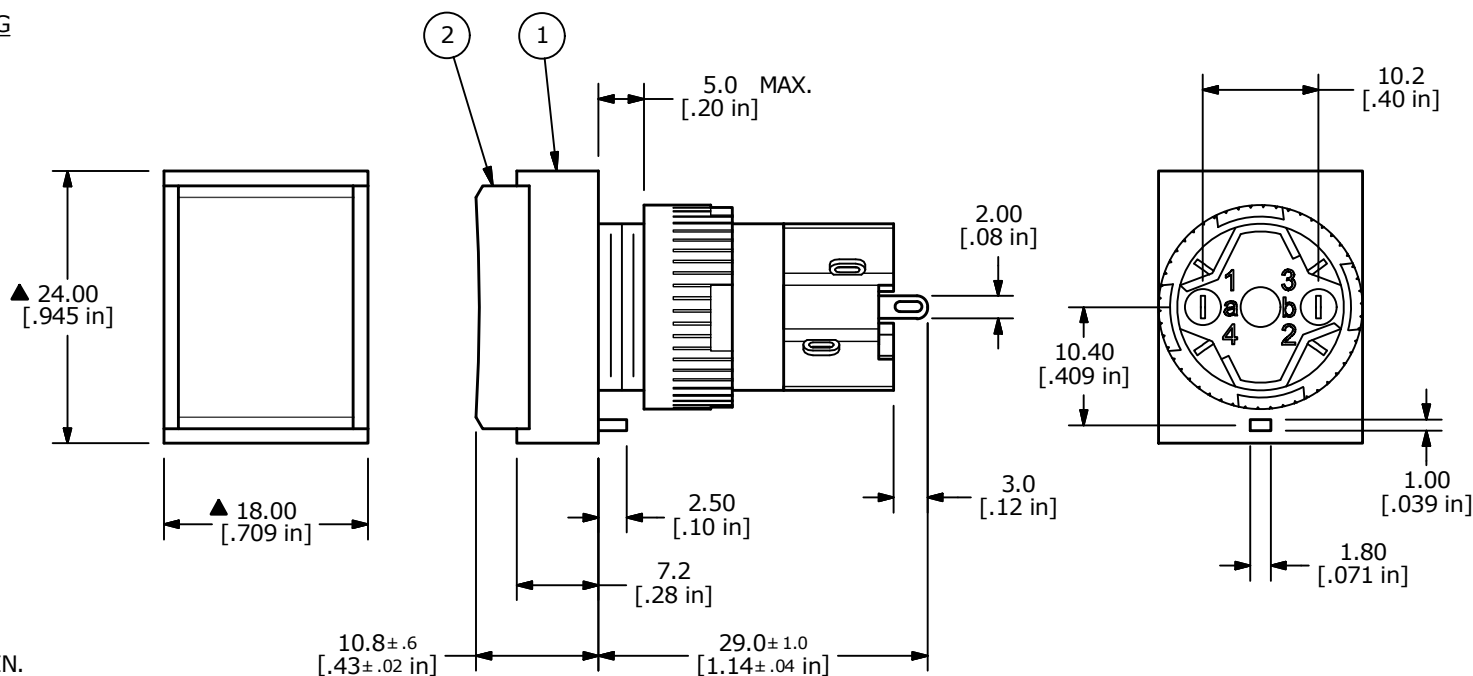
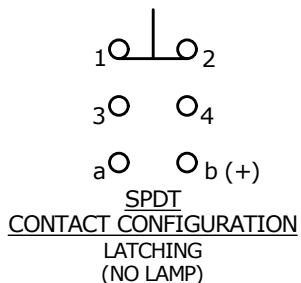


ITEM	QTY	PART NUMBER	DESCRIPTION
1	1	F040004	D16EET11 HOUSING
2	1	F050204	50-002-04 ACTUATOR - RED TRANSPARENT RECTANGULAR CONCAVED LENS
-	-	-	NO LAMP



RECOMMENDED PANEL MOUNTING



- NOTE:
1. ALL DIMENSIONS IN MM [INCH]
 2. GENERAL TOLERANCE: X.X = ±0.4
X.XX = ±0.25
 3. TERMINAL NUMBERS FOR REF ONLY
 4. ELECTRICAL LIFE: 50,000 OPERATIONS
 5. INSULATION RESISTANCE: 1,000 MΩ MIN.
 6. OPERATING TEMP.: -25°C to 70°C (No Lamp)
 - ▲ 7. LAMP VOLTAGE: N/A
 8. ▲ DENOTES CRITICAL PARAMETER.
 9. RATING: 5A @ 250 VAC, 8A @ 125VAC
6A @ 24 VDC
 10. SEAL RATING: IP40
 - ▲ 11. TRAVEL: 3.0mm FULL - LATCHING



A	24035	RELEASE	9/17/19	MW
REV	PCR NO	DESCRIPTION	DATE	BY

TITLE D16EET110RED				
SCALE	DATE	DR	DWG	REV
3:2	9/17/2019	MW	XF0924P	A

THE INFORMATION CONTAINED IN THIS DOCUMENT IS PROPRIETARY TO E-SWITCH AND IS NOT TO BE COPIED OR TRANSFERRED